



Apply to the outside of a vehicle window for best results. The surface should be between 50°F and 85°F, comfortable to the touch.



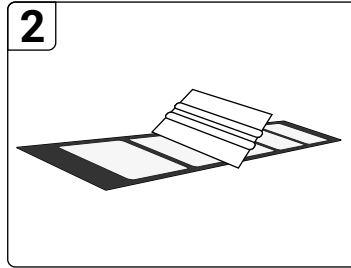
DO NOT block your vision from the driver's seat with the decal! Check vision before fully applying the decal.



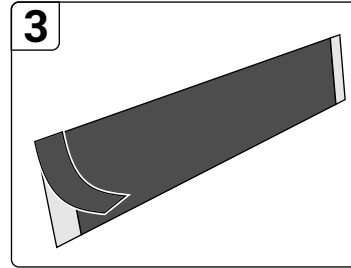
Do not apply to a window that rolls down, or place near a wiper blade. Do not place on tint, which is on the inside of the window.



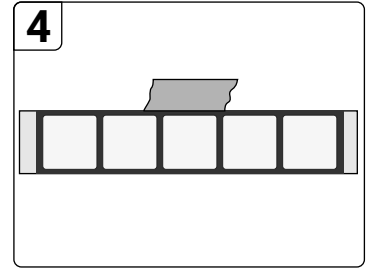
1 Thoroughly clean the area with rubbing alcohol or soap and water. Glass cleaners are not recommended as they leave residue that will prevent the decal from sticking.



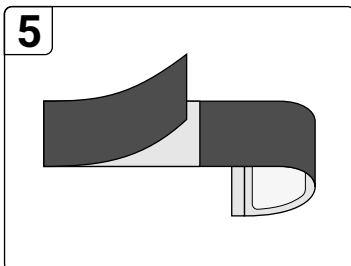
2 Prepare the decal by firmly rubbing the included plastic applicator across the clear transfer tape. This makes sure the decal will stick to the transfer tape.



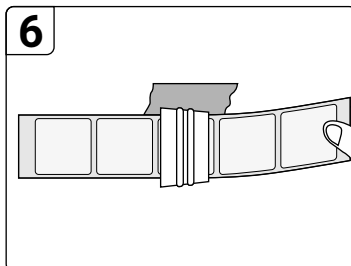
3 Remove the small strips of backing paper from both sides. Use the exposed flaps of transfer tape to hold the decal in place temporarily while positioning.



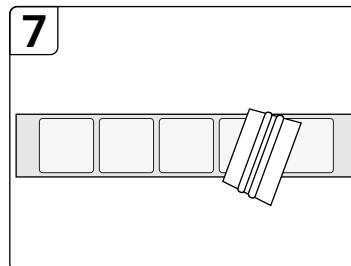
4 Find your desired final position. If centering, measure equal distance on both sides. Place masking tape (or post-it note) to mark top edge.



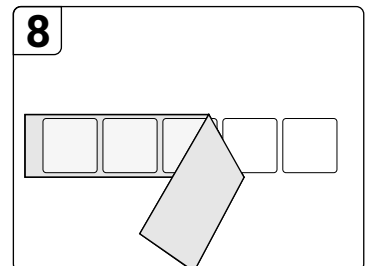
5 Fold the decal back and remove the backing paper. If more than 5 decals, remove half at a time. If the decal sticks to the backing paper, rub the decal firmly again.



6 Slowly apply the decal from the center out using the included plastic applicator squeegee. Align the top with the masking tape (or post-it note) to ensure it is straight.



7 Thoroughly rub with heavy pressure to activate adhesive. Remove air bubbles by rubbing them toward the nearest edge.



8 Slowly remove the clear tape by pulling from one corner to the other at a sharp angle. If the decal comes up with the tape, rub it firmly again with the applicator.



If there are any bubbles that you can't remove with your applicator, very carefully poke them with a small needle to let the air out then try again. The decal will be safe for rain almost right away, but please wait a few days before washing your vehicle. Make sure you don't scrape your decal off with an ice scraper!

MORE HELP:

<https://www.iamdecals.com/help>